



Under control



AFFETTI PUMPS

YOUR
SOLUTIONS

CORROSIVE APPLICATIONS



We build unique systems

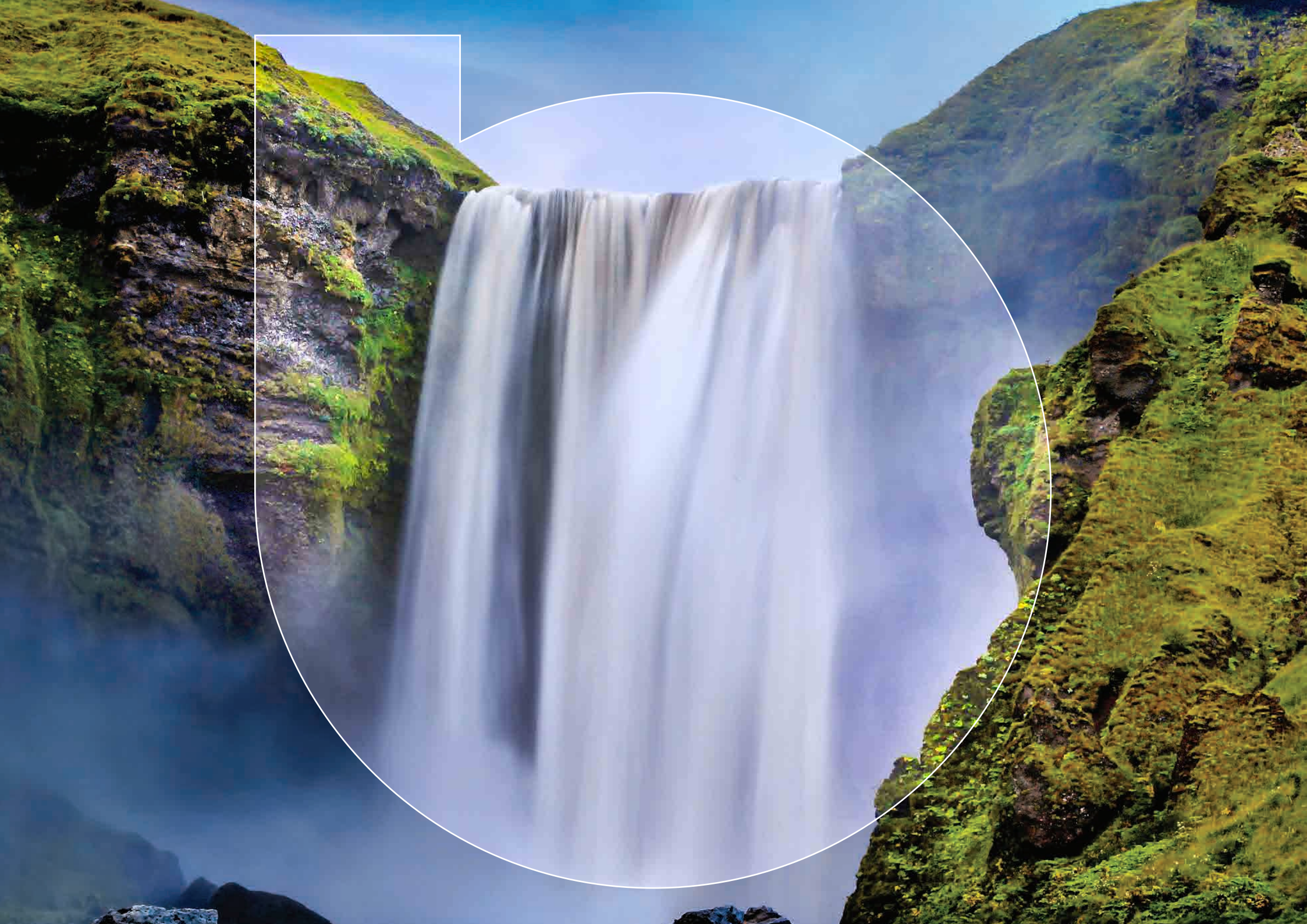
Tailor-made solutions that consider every detail, for all your pumping needs.

Our starting point is always a careful and accurate analysis of your needs.

Only in this way, can we find the perfect solution and build you truly made-to-measure pumps, capable of responding to the often-complicated challenges posed by the corrosive liquids sector.

Every detail must be analysed both in selection and design phases. The latest generation software, the Agile Pump Selector, allows you to independently identify the machine that best responds to your specific technical needs. Our know-how, comes from over

35 years of experience and is used to find innovative solutions. We design pumps whose performance is both effective and efficient, in order to meet the needs of a tailored product, perfect in every detail.



Save the water



Pulp and paper
Fish-farm
Steel
Petrochemical
Desalination
Automotive
Storage chemicals
Printed circuit
Water treatment
Aquarium
Biodiesel
Reverse osmosis
Fertilizer
Scrubbers
Mining
Water parks
Textile



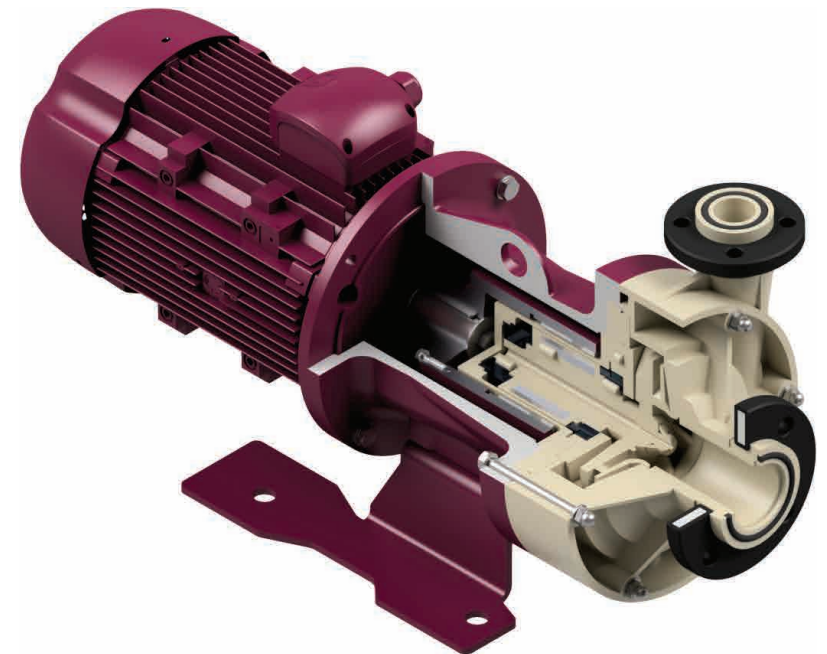
Designed to withstand everything

Special materials, cutting-edge technology and 'Made in Italy' know-how. Designed to withstand everything.

In highly corrosive environments products are required to provide a guaranteed performance and efficiency over time.

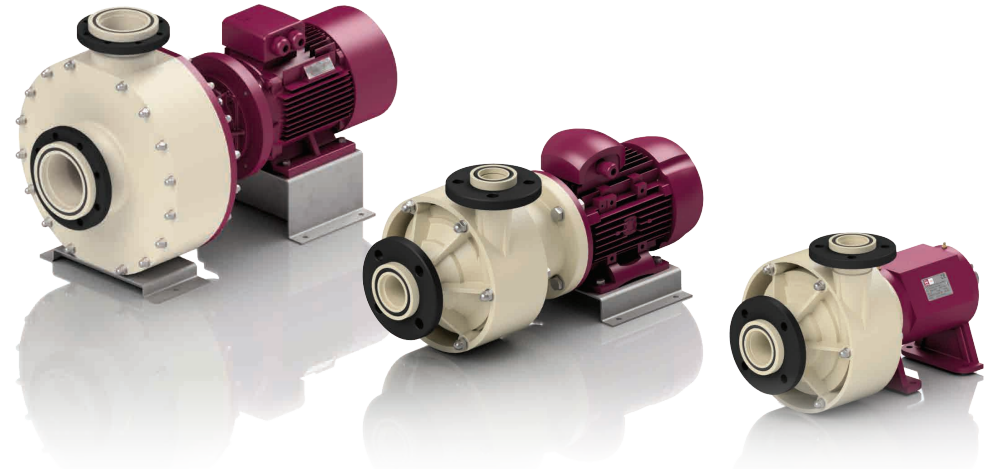
Affetti deliver the optimal solution to you by using cutting-edge materials, such as special thermoplastics and synthetic glass-fibre reinforced resins that are capable of resisting corrosion whilst withstanding abrasive liquids.

- > HORIZONTAL CENTRIFUGAL PUMPS
- > SUMP CENTRIFUGAL PUMPS
- > HORIZONTAL CENTRIFUGAL PUMPS WITH MAGNETIC DRIVE
- > VOLUMETRIC SELF - PRIMING PUMPS



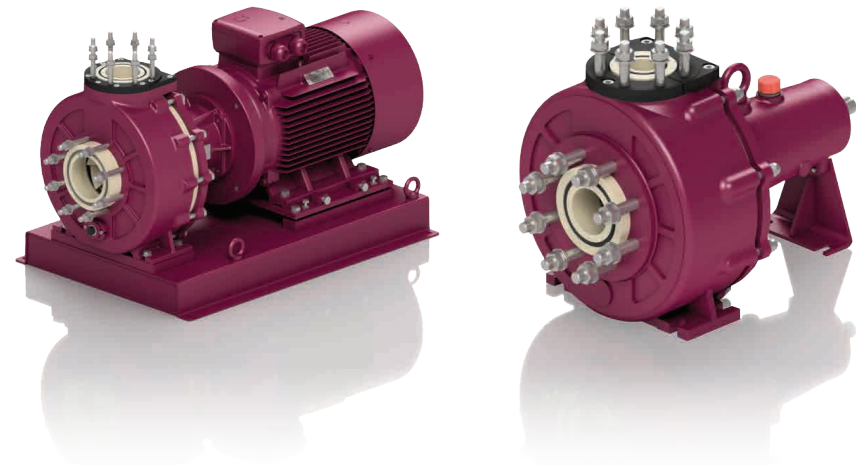
Horizontal centrifugal pumps

Series		CMO-N	CGO
Flow	mc/h	10 - 350	10 - 150
Head	mlc	5 - 72	5 - 41
Power	Kw	0,55 - 55	0,55 - 18,5
Speed rotation	RPM	1450 - 1760 - 2950 - 3450	
Operating temperatures	°C	-15 +110	
Materials		PP - PVDF - PEHD	
Available		With mechanical seal	
Execution		Close coupled	With base and elastic coupling



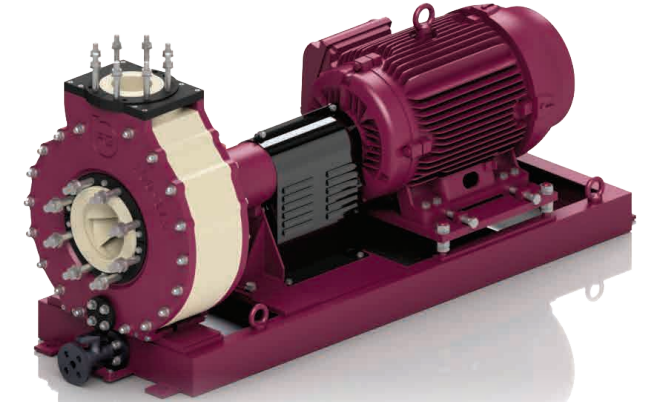
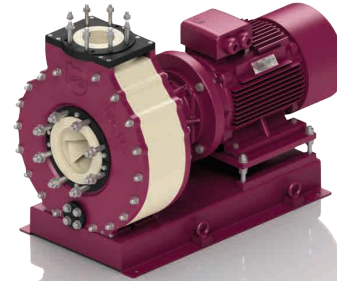
Armoured normalized horizontal centrifugal pumps (ISO 2858 DIN EN 22858)

Series		CDM / CDM-E	CGD / CGD-E
Flow	mc/h	10 - 350	10 - 1000
Head	mlc	5 - 72	5 - 120
Power	Kw	1,1 - 55	1,1 - 200
Speed rotation	RPM	1450 - 1760 - 2950 - 3450	
Operating temperatures	°C	-15 +110	
Materials		PP - PVDF - PEHD	
Available		With mechanical seal	
Execution		Close coupled	With base and elastic coupling



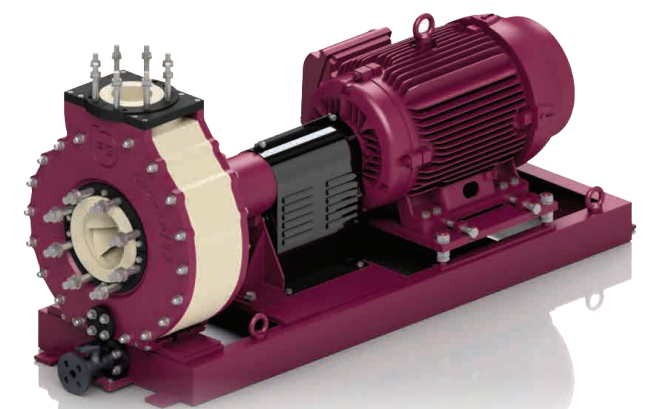
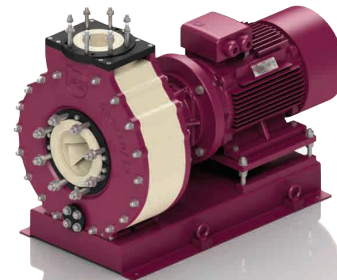
Normalized horizontal centrifugal pumps (ISO 2858 DIN EN 22858)

Series		CDI	CGI
Flow	mc/h	10 - 350	10 - 1000
Head	m/c	5 - 72	5 - 120
Power	Kw	1,1 - 55	1,1 - 200
Speed rotation	RPM	980 - 1180 - 1450 - 1760 - 2950 - 3450	
Operating temperatures	°C	-15 +110	
Materials		PP - PVDF - PEHD	
Available		With mechanical seal	
Execution		Close coupled	With base and elastic coupling



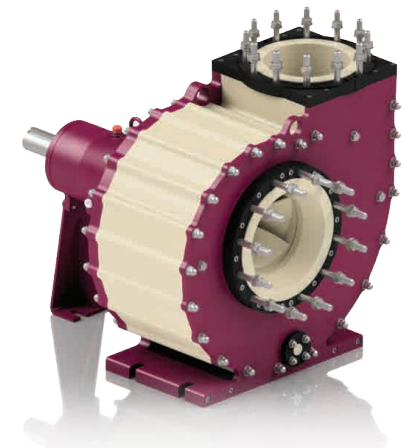
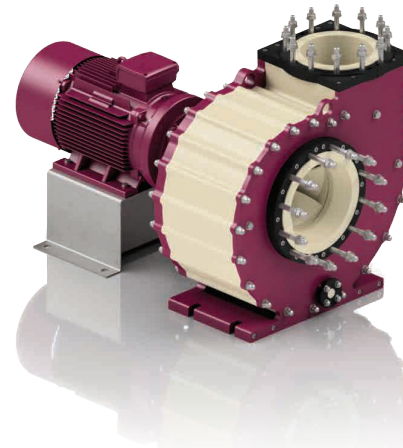
Normalized horizontal centrifugal pumps (ANSI ASME B73.1)

Series		CDA	CGA
Flow	mc/h	10 - 350	10 - 1500
Head	m/c	5 - 72	5 - 120
Power	Kw	1,1 - 55	1,1 - 200
Speed rotation	RPM	980 - 1180 - 1450 - 1760 - 2950 - 3450	
Operating temperatures	°C	-15 +110	
Materials		PP - PVDF - PEHD	
Available		With mechanical seal	
Execution		Close coupled	With base and elastic coupling



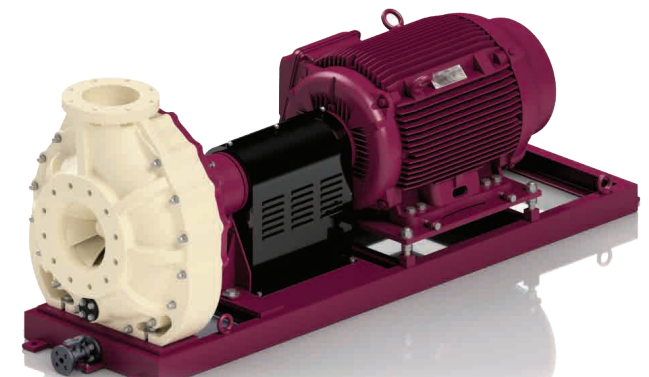
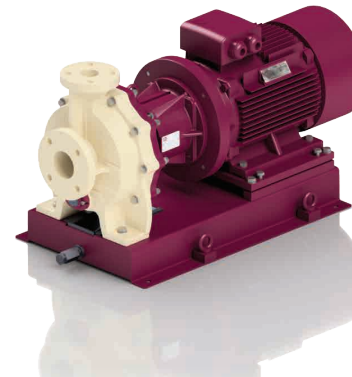
Process horizontal centrifugal pumps for high flow

Series		CMK	CGK
Flow	mc/h	10 - 800	200 - 3200
Head	m/c	5 - 25	5 - 55
Power	Kw	3 - 55	5,5 - 200
Speed rotation	RPM	750 - 910 - 980 - 1180	
Operating temperatures	°C	-15 +110	
Materials		PP - PVDF - PEHD	
Available		With mechanical seal	
Execution		Close coupled	With base and elastic coupling



Horizontal fiberglass centrifugal pumps (ANSI ASME B73.1)

Series		CFM	CFG
Flow	mc/h	10 - 350	10 - 1500
Head	m/c	5 - 72	5 - 120
Power	Kw	1,1 - 55	1,1 - 200
Speed rotation	RPM	980 - 1180 - 1450 - 1760 - 2950 - 3450	
Operating temperatures	°C	-30 +120	
Materials		Fiberglass reinforced vinyl ester resin	
Available		With mechanical seal	
Execution		Close coupled	With base and elastic coupling



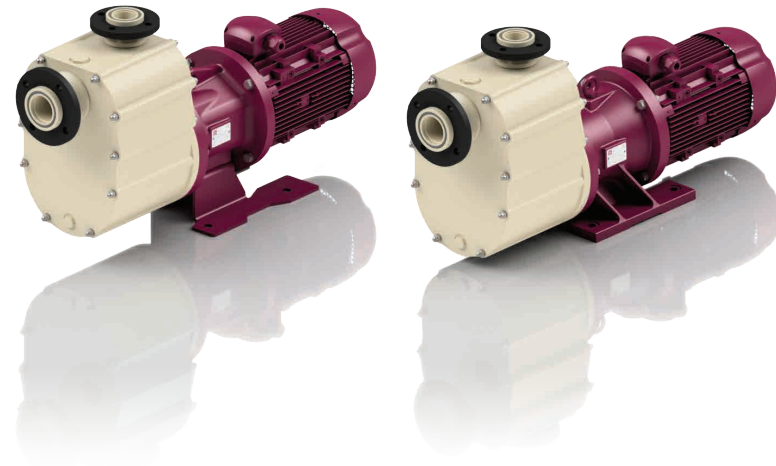
Horizontal centrifugal pumps with magnetic drive

Series	MMB-L		MMB-N	
Flow	mc/h		5 - 120	
Head	mlc		6 - 41	
Power	Kw		0,75 - 18,5	
Speed rotation	RPM		1450 - 1760 - 2950 - 3450	
Operating temperatures	°C		-10 +100	
Materials			PP - PVDF	
Available			With magnetic drive	
Execution			Close coupled	



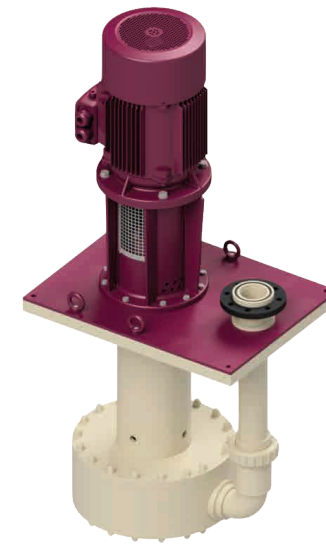
Self priming centrifugal pumps

Series	MSP - L		MSP - N		MSP - T	
Flow	mc/h		5 - 56			
Head	mlc		10 - 42			
Max. suction head	mlc		4			
Power	Kw		0,75 - 18,5			
Speed rotation	RPM		1450 - 1760 - 2950 - 3450			
Operating temperatures	°C		-10 +100			
Materials			PP - PVDF			
Available			With magnetic drive		With mechanical seal	
Execution			Close coupled			



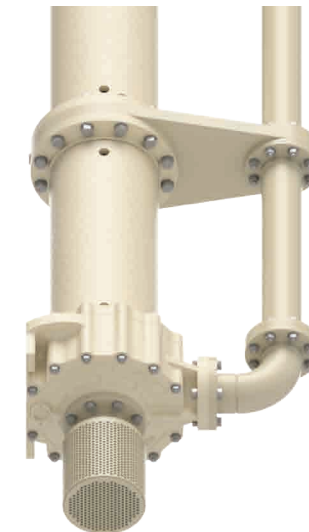
Sump centrifugal pumps

Series		CGV - L	CGV - N
Flow	mc/h	5 - 120	5 - 450
Head	mlc	6 - 40	6 - 100
Power	Kw	0,75 - 18,5	0,75 - 75
Speed rotation	RPM	980 - 1180 - 1450 - 1760 - 2950 - 3450	
Operating temperatures	°C	-5 +70	-10 +90
Materials		PP - PVDF - PEHD	
Pump length	m	from 0,5 to 3	from 0,5 to 5
Execution		With elastic coupling	



Sump fiberglass centrifugal pumps

Series		CFV - N
Flow	mc/h	10 - 1300
Head	mlc	5 - 110
Power	Kw	1,1 - 200
Speed rotation	RPM	980 - 1180 - 1450 - 1760 - 2950 - 3450
Operating temperatures	°C	-20 +110
Materials		Integral fiberglass reinforced vinyl ester resin or with some components in PP
Pump length	m	From 0,5 to 5
Execution		With elastic coupling



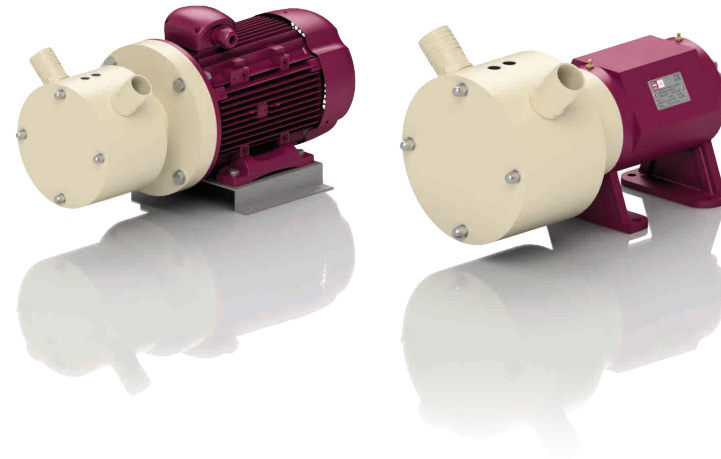
Cantilever centrifugal sump pumps

Series		CGV - S
Flow	mc/h	5 - 450
Head	mlc	6 - 100
Power	Kw	1,1 - 75
Speed rotation	RPM	980 - 1180 - 1450 - 1760 - 2950 - 3450
Operating temperatures	°C	-10 +90
Materials		PP - PVDF - PEHD
Pump length	m	From 0,5 to 1,5
Execution		With elastic coupling



Volumetric self - priming pumps

Series		VMA	VGA
Flow	mc/h		1,5 - 25
Head	mlc		1,5 - 30
Max. suction head	mlc		4
Power	Kw		0,25 - 5,5
Speed rotation	RPM		750 - 910 - 980 - 1180 - 1450 - 1760
Operating temperatures	°C		-10 +100
Materials			PP - PVC - PVDF - PEHD
Available			With double lip seal
Execution		Close coupled	With base and elastic coupling





Your ideal partner, for over 35 years, at your side in finding new solutions. Because your trust is our greatest success.

Integrity, loyalty and trust; these are the pillars of every relationship we establish with our customers. We support you every step of the way, assessing the operating conditions (e.g. type of liquid to be pumped, concentration, specific weight, flow rate, pressure head, environmental conditions, etc.) and working with you on the very best solutions. The information that you give us is analysed by our technical and commercial team, who consider every detail, as attention to detail, is the thing that makes the difference as we all know. Our pumps are in use in over 45 countries around the world, where the value of 'Made in Italy' is appreciated.

Our adventure began in the 60s, inspired by the ideas of founder Giuseppe Affetti and implemented from the 80s onwards with the production of the first thermoplastic electric pumps. Since 2013, the range has been enriched with the production of glass-fibre reinforced vinylester resin systems, used by the world's leading engineering companies operating in the electrochlorination and seawater desalination sectors for civil and industrial use.

The sectors we regularly deliver solutions for include: chemical, galvanic, energy, nuclear, iron and steel, fish farming, mining, water and air treatment. In recent years our pumps have also been installed at water parks and marine aquariums, such as in Jakarta, Bali, Kuwait City, Granada, Lisbon, Klaipeda (Lithuania), Ajaccio, Genoa.

Right
by
your
side

Affetti Pumps s.r.l.

Via Pietro Maroncelli 4 | 21013 Castellanza (VA) | Italy

Ph. +39 (0)331 503358/505595 | Fax +39 (0)331 483007 affetti@affetti.com

www.affetti.com



TECHNIQUES DES FLUIDES
7 rue de la Fosse aux Loups
95100 ARGENTEUIL
Tel. : 01 34 11 13 73
Fax : 01 34 11 96 35
www.techniquesfluides.fr